



### Intersec

16-18th Jan, 2024

Booth: **SA-N10**

Dubai, UAE

### ISE

30 Jan - 2 Feb, 2024

Booth: **5K930**

Barcelona, Spain

### Getshow

3-6th Mar, 2024

Booth: **19.1C6**

Guangzhou, China

### Infocomm China

17-19th Apr, 2024

Booth: **Hall E, EJ2-01**

Beijing, China

### Prolight & Sound Guangzhou

23-26th May, 2024

Booth: **Hall 1.2-B52**

Guangzhou, China

### Infocomm Asia

17-19th Jul, 2024

Booth: **D30**

Bangkok, Thailand

### Intersec 2025

14-16th Jan, 2025

Dubai, UAE

### ISE 2025

4-7th Feb, 2025

Booth: **7K500**

Barcelona, Spain



Guangzhou DSPPA Audio Co., Ltd.

#### Address

NO.1 Xiahe Road, Jianggao, Baiyun,  
Guangzhou, Guangdong, China

#### Email

export@dsppa.com  
Conference@dsppa.com

#### Tel

+86-20-37166520

#### Website

www.dsppacs.com



# PRO AUDIO SYSTEM

Designed for Sound,  
Engineered for Excellence





Guangzhou **DSPPA Audio Co., Ltd.** is a professional audio manufacturer since 1988. With more than 35 years' history of designing and manufacturing professional audio & video products, DSPPA has enjoyed a high reputation in and out of China. Technology innovations, strict quality and environment control (ISO 9001 & ISO14000) and market-oriented products have made DSPPA to be the leading brand in the field of public address system and conference system. As the chief editor of the Technical Standard for Public Address System Engineering of China, DSPPA is widely recognized as the largest and most professional audio equipment supplier in China.

- » DSPPA Production Range
- » Professional Loudspeaker
- » Active Line Array Speaker
- » Active Subwoofer
- » Professional Wallmount Speaker
- » Professional Column Speaker
- » Dante/DSP Amplifier
- » Professional Amplifier
- » Professional Audio Processor

<b>Factory</b> 85000 m <sup>2</sup> + 2 production centers	<b>Head office</b> 20000 m <sup>2</sup>	<b>Warehouse</b> 6000 m <sup>2</sup>	<b>Factory</b> 500+ people	<b>Sales Team</b> 300+ people	<b>QC Dept</b> 80+ people	<b>R&amp;D Engineers</b> 260+ people
--	--	---	-------------------------------	----------------------------------	------------------------------	---



**Product Advantage**

Wide range of products and adequate stocks

**Design Advantage**

Brilliant R&D team, OEM/ODM available

**Production Advantage**

Automatic production and strict quality control

**Service Advantage**

Professional pre-sales & after-sales service, strong technical support

**Technology Advantage**

Outstanding technological innovation capability, hundreds of patents

**Logistics Advantage**

Large warehouse and sufficient worker to ensure fast and timely delivery

## 2022 HANGZHOU ASIAN GAMES

The Official Supplier of Audio Equipment for Two Consecutive Asian Games



Official Supplier for the Asian Games Hangzhou 2022  
Official Supplier of Audio Equipment for the 19th Asian Games Hangzhou 2022



## 2018 JAKARTA ASIAN GAMES



The Official Support Partner of the 18th Asian Games  
The Exclusive Public Address and Intelligent Conference System of the 18th Asian Games



The 18th Asian Games, also known as Jakarta Palembang 2018, is a Pan-Asian multi-sport event held in Jakarta and Palembang, Indonesia from 18 August to 2 September, 2018. Due to the popularity and reputation of its products, DSPPA becomes the official support partner and the exclusive supplier of the public address and intelligent conference system for the event. A large amount of PA audio equipment is sponsored to venues across four provinces in Indonesia: Jakarta, South Sumatra, Banten, and West Java. Better PA service is provided by DAPPA for the 18th Asian Games.





20 R&D teams, 200+ engineers

DSPPA intends to be the most advanced global PA& Conference enterprise by continuous technical innovation and advanced quality management. Welcome to cooperate with us at all levels of collaborations, such as trades, distributions, OEM, ODM, technical cooperation, new products development and joint venture to realize win-win situation.



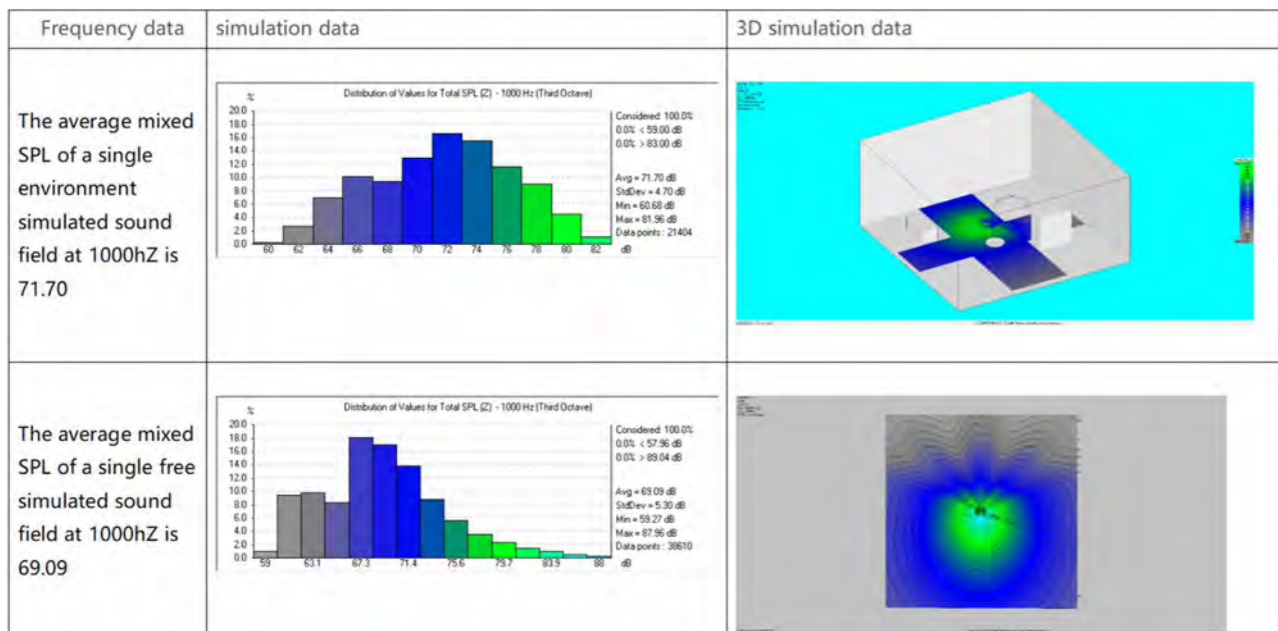
The success of DSPPA is based on advanced technology, market-orientated strategy and insistent efforts. DSPPA is dedicated to providing the first-class products and service for worldwide clients.

RoHs Certificate  
FCC Certificate  
AEO Certificate

UL Certificate  
CCC Certificate  
Chief Editor of Technical Standard for public address system engineering

CE Certificate  
IP66 Certificates

CB Certificate  
ISO9001, ISO14000



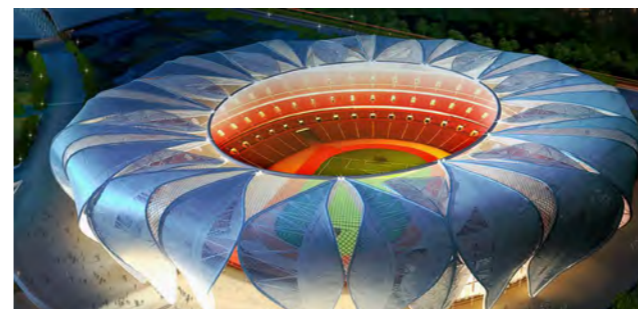




Pro Audio System



Pro Audio Experience Center



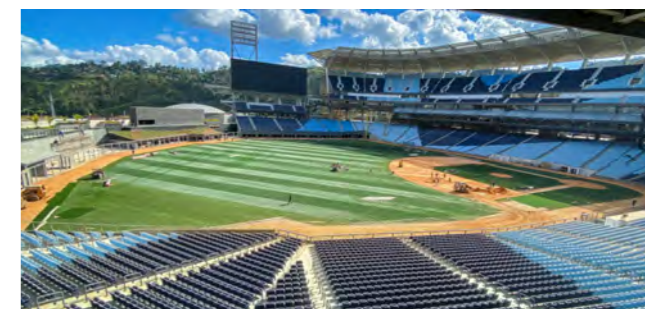
2023 Hangzhou Asian Games



2018 FIFA World Cup Training Stadiums



2014 Winter Olympics in Sochi Russia



La Rinconada Baseball Stadium in Venezuela



Stadion CKS Czeladź Poland



Tripoli International Stadium in Libya



Army Auditorium in Bangladesh



Football Stadium in Serbia



Vision for Africa High School in Uganda



Jiuzhaigou Middle School Playground in Sichuan



# CONTENTS

## 01 Professional Loudspeaker

- 01 Digital Steerable Array System
- 05 Active Line Array Speaker System
- 12 Passive Line Array Subwoofer
- 16 Professional Wallmount Speaker
- 20 Professional Column Speaker
- 22 Professional Horn Speaker

## 23 Professional Amplifier

- 23 Dante / DSP Amplifier
- 25 4 Channels Class-D Amplifier

## 27 Professional Mixer

- 27 Analog Mixer

## 30 Professional Audio Processor

- 30 Classical Audio Processor
- 32 Immersive Audio Processor

## 36 Peripheral

- 36 Feedback Processor
- 37 Sequence Controller
- 39 Accessory

- 02 Active Column Line Array Speaker System
- 10 Passive Line Array Loudspeaker
- 14 Outdoor Line Array Loudspeaker
- 19 Active Professional Speaker
- 21 Professional Ceiling Speaker

- 24 2 Channels Class-D Amplifier
- 26 Analog Professional Amplifier

- 29 Digital Mixer

- 32 High-end Audio Processor
- 33 Hot Sale Audio Processor

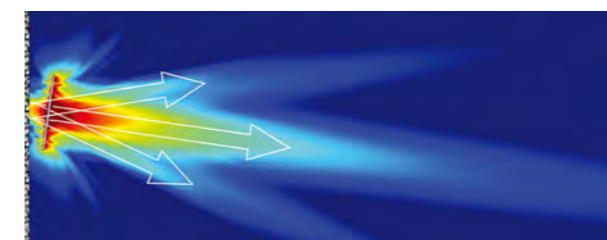
- 36 CD Player
- 38 Microphone

## DSP1500T / DSP1500L (Slave) 8x35W / 200W Active Phased Array Column Speaker

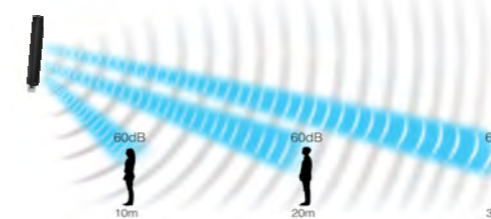


DSP1500T DSP1500L

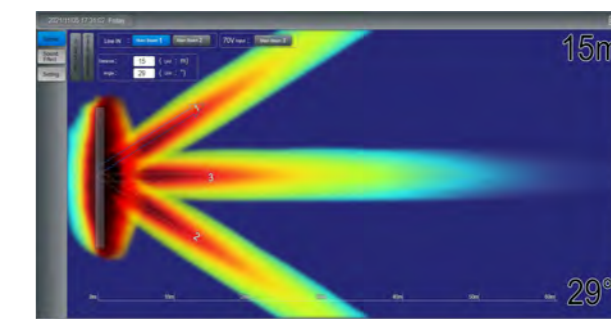
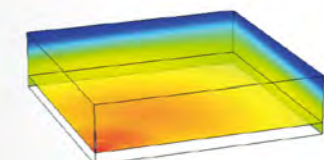
- Rated power: 8x35W / 200W
- Max SPL: 103±2dB, cover angle(HxV): 130°x ±45°
- Speaker unit: 8x4" fith three-bands sound beam direction control
- With built-in high-performauull-band speaker units
- With built-in multi-band FIR+IIR equalizer
- Wnce DSP patented algorithm sidelobe suppression
- With DDC(Digital Directivity Control) technology
- Wireless control via web interface
- Power supply: AC 100V-240V, 47-63Hz
- With ultra-high sensitivity input signal detection function, for flexible start and noise reduction
- The column speaker shell is made of aluminum, small in size and light in weight
- Suitable for speech and background music playback in various conference halls, museums, and concert halls
- Dimension: 124.7x130.5x1018mm
- Net weight: 8.75kg / 10kg



Three-bands sound beam direction control



Sound Field Distribution of Phased Array Directional Loudspeaker



Software control interface



Angle adjustable  
Up+Down Left+Right



D5M / D10M / D20M / D25M / D50M  
Connecting Wire (5m/10m/20m/25m/50m)



D85  
Connection Bracket



D7801

180W 3.5" Passive Line Array Loudspeaker



RMS Power	180W
Impedance	8Ω
Driver Units	3.5"×4+1"×1
Max SPL	MF:121dB / HF:132dB
Sensitivity	MF:96dB / HF:110dB
Freq. Response	140Hz-20kHz
Radiation Angle (H×V)	140°×40°
Dimensions	101×114×460mm
Net Weight	3kg

D7802

450W 14" Active Subwoofer



RMS Power	450W
Impedance	8Ω
Driver Units	14"×1
Max SPL	126dB±2dB
Sensitivity	97dB±2dB
Freq. Response	40Hz-500Hz
Dimensions	396×500×553mm
Net Weight	29kg



D7801 + D7802

LA-4530

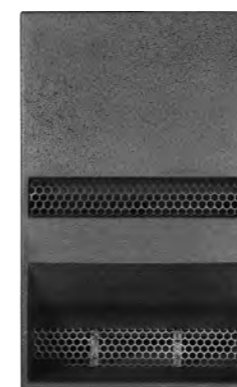
300W 4.5" Professional Column Speaker



RMS Power	300W
Impedance	4Ω
Driver Units	4.5"×4
Max SPL	132±2dB
Sensitivity	94±2dB
Freq. Response	60Hz-20kHz
Radiation Angle (H×V)	100°×90°
Dimensions	187×244×562mm
Net Weight	9kg

LA-4530S

400W 15" Active Subwoofer



RMS Power	400W
Impedance	20kΩ
Driver Units	12"×1
Max SPL	129±2dB
Sensitivity	100±2dB
Freq. Response	35Hz-160Hz
Dimensions	430×567×700mm
Net Weight	34kg



LA-4518 + LA-4518S

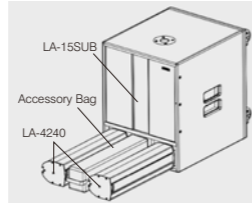


**LA-4240**  
240W 4.5" Passive Line Array Loudspeaker



RMS Power	240W
Impedance	8Ω
Driver Units	4.5"×4
Max SPL	122dB
Sensitivity	99dB
Freq. Response	110Hz-17kHz
Radiation Angle (H×V)	120°×160°
Dimensions	496×125×138mm
Net Weight	6.8kg

**LA-15SUB**  
600W 15" Active Subwoofer



RMS Power	600W
Impedance	8Ω
Driver Units	15"×1
Max SPL	126dB
Freq. Response	40Hz-250kHz
Dimensions	600×460×540mm
Net Weight	28.6kg



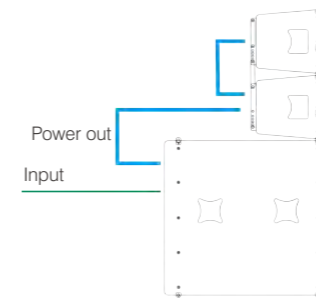
LA-4240 + LA-15SUB

**LA1612**  
12" Active Party Speaker With DSP Control



Rated Power	800W
Audio source	Bluetooth/USB/SD
LF Woofer	12" woofer
Tweeter	8pcs x 2.5" drivers
Impedance	4Ω
Frequency	40Hz-20kHz
Sensitivity	110dB
Max SPL	121dB
Input Jack	XLR/JACK*6 Channels
Output Jack	XLR
DSP Presets	MAIN, HIFI, MONITOR, DJ, SPEECH
AC Input	AC110V/60Hz or AC230V/50Hz
Net Weight	25kg

**LAM1430 + LAM1430SA / LAM1432 + LAM1432SA**  
Dual 10" Full Frequency Portable Line Array Speaker System



- A small line array speaker system with built-in processor (DSP)
- Small in size, beautiful in shape, equipped with special flight case, with strong mobility
- With integrated design and installation, easy to use
- Adopt wear-resistant surface treatment, with all-aluminum hanging parts
- The system is suitable for small mobile performances, stadiums, theaters, bars, banquet halls and other places
- LAM1432+LAM1432SA equipped with high quality driver unit

	LAM1430 / LAM1432	LAM1430SA / LAM1432SA
Unit Structure	10" MF×1, 1.4" HF×2	18" woofer ×1
Frequency Response	65Hz-18kHz	38Hz-220Hz
Speaker Sensitivity (converted to 1m, 1W)	MF: 96±2dB / HF: 104±2dB	99±2dB
MAX. SPL.	MF: 120±2dB / HF: 126±2dB	127±2dB
Continuous Power (AES)	MF: 350W / HF:120W	/
Rated Impedance	MF: 4Ω / HF: 16Ω	/
Single Speaker Directivity (H×V)	100°×10°	/
Active Signal Input Impedance	/	20 kΩ
Amplifier Power	/	1500W+900W+900W@4Ω
Continuous Power	/	800W (AES)
Amplifier Input Sensitivity	/	0.775V
Amplifier Distortion	/	< 0.05%
Working Voltage	/	AC220V~50/60Hz
Dimensions (W×H×D)	500mm×296mm×342mm	500mm×650mm×705mm
Net Weight	20kg	48kg



**LA-8300**  
350W 3" Active Line Array Speaker



Speaker Power	350W
Amplifier Power	Class-D, 8Q/2×300W
Driver Units	MF 8×3", HF 8×1"
Max SPL	124dB
S/N Ratio	>100dB
Distortion	<0.05%
Freq. Response	20Hz-20kHz
Dimensions	360×260×288mm
Net Weight	13kg

**LA-212SUB**  
800W 12" Active Subwoofer



Subwoofer Power	800W
Unit Component	LF 12"×2
MAX SPL	134dB
Frequency Response	50Hz~300Hz
Digital Amplifier Module	DSP processor, class-D amplifier
Amplifier Channel/Power	Single channel, 1500W/8Ω
THD	<0.1%
Input/Output	XLR (balanced)
Power Supply	AC110V~250V, 50Hz/60Hz
Dimensions (H×W×D)	706×400×580mm
Net Weight	38.5kg



LA-8300+LA-212SUB

**LA1426A**  
Dual 6.5" Active Line Array Loudspeaker



RMS Power	500W
Impedance	20kΩ
Driver Units	6.5"×2+1.75"×1
Max SPL	118±2dB
Sensitivity	95±2dB
Freq. Response	150Hz-20kHz
Radiation Angle (H×V)	100°×20°
Power Supply	AC190V-240V/50Hz
Dimensions	573×360×192mm
Net Weight	13kg

**LA1426SA**  
15" Active Line Array Subwoofer



RMS Power	800W
Impedance	20kΩ
Driver Units	15" Woofer ×1
Max SPL	125±2dB
Sensitivity	98±2dB
Freq. Response	50Hz-300Hz
Power Supply	AC190V-240V/50Hz
Dimensions	573×570×449mm
Net Weight	42kg



LA1426A + LA1426SA

**LA1428A**  
Dual 8" Active Line Array Loudspeaker



RMS Power	600W
Impedance	20kΩ
Driver Units	8"×2+1.75"×2
Max SPL	124±2dB
Sensitivity	98±2dB
Freq. Response	70Hz-18kHz
Radiation Angle (H×V)	120°×20°
Power Supply	AC190V-240V/50Hz
Dimensions	643×385×232mm
Net Weight	17kg

**LA1428SA**  
18" Active Line Array Subwoofer



RMS Power	1200W
Impedance	20kΩ
Driver Units	18" Woofer ×1
Max SPL	127±2dB
Sensitivity	99±2dB
Freq. Response	40Hz-250Hz
Power Supply	AC220V/50Hz/60Hz
Dimensions	542×620×489mm
Net Weight	49kg



LA1428A + LA1428SA



LA1421A

Dual 10" Active Line Array Loudspeaker



RMS Power	1000W
Impedance	20kΩ
Driver Units	10"×2+3"×1
Max SPL	131±2dB
Sensitivity	103±2dB
Freq. Response	60Hz-20kHz
Radiation Angle (H×V)	120°×20°
Power Supply	AC190V-240V/50Hz
Dimensions	780×474×306mm
Net Weight	28kg



LA1421A + LA1421SA

LA1421SA

Dual 15" Active Line Array Subwoofer



RMS Power	1500W
Impedance	20kΩ
Driver Units	15" Woofer ×2
Max SPL	134±2dB
Sensitivity	104±2dB
Freq. Response	35Hz-230Hz
Power Supply	AC190V-240V/50Hz
Dimensions	779×685×521mm
Net Weight	63kg

LA1423A

12" Active Line Array Loudspeaker



RMS Power	1000W
Impedance	20kΩ
Driver Units	12"×1+2.5"×2
Max SPL	123±2dB
Sensitivity	97±2dB
Freq. Response	58Hz-18kHz
Radiation Angle (H×V)	120°×20°
Power Supply	AC190V-240V/50Hz
Dimensions	582×414×343mm
Net Weight	24kg



LA1423A + LA1423SA

LA1423SA

18" Active Line Array Subwoofer



RMS Power	1000W
Impedance	20kΩ
Driver Units	18" Woofer ×1
Max SPL	127±2dB
Sensitivity	99±2dB
Freq. Response	35Hz-220Hz
Power Supply	AC190V-240V/50Hz
Dimensions	520×582×660mm
Net Weight	49kg

LA1715

15" Active Array Column Speaker



- The LA1715 15-inch active array column speaker boasts a robust 2×500W amplifier, integrating a 15" woofer and six 4" tweeters for immersive sound, which is an exceptional piece of audio equipment designed for versatile and high-quality sound reproduction. Additionally, the LA1715 offers a range of functionalities such as digital signal processing, Bluetooth connectivity and True Wireless Stereo Technology, enhancing its versatility for diverse audio needs, making it a standout choice for quality sound on various occasions.

Amplifier Power	2×500W
LF Woofer	15" woofer
Tweeter	6pcs×4" drivers
Impedance	8Ω
Supported Function	DSP+BT+TWS
Materials	Full Range Speaker Mesh Cover: Iron Mesh 0.6mm Subwoofer Mesh Cover: 15mm Thick Density Board
Net Weight	56kg



LA1408

8" Full Frequency Line Array Loudspeaker



RMS Power	200W
Impedance	16Ω
Driver Units	8"×1+1.75"×1
Max SPL	118±2dB
Sensitivity	95±2dB
Freq. Response	65Hz-18kHz
Radiation Angle (H×V)	100°×10°
Dimensions	210×530×340mm
Net Weight	17.5kg

LA1420

Dual 10" Full Frequency Line Array Loudspeaker



RMS Power	650W
Impedance	8Ω
Driver Units	10"×2+1.75"×2
Max SPL	128±2dB
Sensitivity	99±2dB
Freq. Response	50Hz-18kHz
Radiation Angle (H×V)	120°×10°
Dimensions	330×610×490mm
Net Weight	24kg

LA1422

10" Full Frequency Line Array Loudspeaker



RMS Power	350W
Impedance	8Ω
Driver Units	10"×1+1.75"×2
Max SPL	121±2dB
Sensitivity	96±2dB
Freq. Response	62Hz-18kHz
Radiation Angle (H×V)	120°×20°
Dimensions	274×500×350mm
Net Weight	17kg

LA1423

12" Full Frequency Line Array Loudspeaker



RMS Power	450W
Impedance	8Ω
Driver Units	12"×1+2.5"×2
Max SPL	123±2dB
Sensitivity	97±2dB
Freq. Response	58Hz-18kHz
Radiation Angle (H×V)	120°×20°
Dimensions	343×585×414mm
Net Weight	22kg

LA1426N / LA1428N

Dual 6.5" / 8" Full Frequency Line Array Loudspeaker



	LA1426N	LA1428N
RMS Power	300W	400W
Impedance	16Ω	16Ω
Driver Units	6.5"×2+1.75"×1	8"×2+1.75"×1
Max SPL	118±2dB	124±2dB
Sensitivity	95±2dB	98±2dB
Freq. Response	150Hz-20kHz	70Hz-20kHz
Radiation Angle (H×V)	100°×20°	120°×20°
Dimensions	573×360×192mm	643×385×232mm
Net Weight	12kg	16kg

LA1421

Dual 10" Full Frequency Line Array Loudspeaker



RMS Power	600W
Impedance	8Ω
Driver Units	10"×2+3"×1
Max SPL	131±2dB
Sensitivity	103±2dB
Freq. Response	60Hz-20kHz
Radiation Angle (H×V)	120°×20°
Dimensions	780×474×306mm
Net Weight	26kg

LA1412

Dual 12" Full Frequency Line Array Loudspeaker



RMS Power	1000W
Impedance	8Ω
Driver Units	12"×2+3"×2
Max SPL	134±2dB
Sensitivity	104±2dB
Freq. Response	65Hz-18kHz
Radiation Angle (H×V)	90°×20°
Dimensions	936×494×360mm
Net Weight	42kg

LA1415

Dual 15" Full Frequency Line Array Loudspeaker



RMS Power	1200W
Impedance	8Ω
Driver Units	15"×2+3"×2
Max SPL	136±2dB
Sensitivity	105±2dB
Freq. Response	55Hz-19kHz
Radiation Angle (H×V)	90°×8°
Dimensions	1123×544×420mm
Net Weight	62kg



**LA1408S**  
15" Line Array Subwoofer



RMS Power	500W
Impedance	8Ω
Driver Units	15" Woofer ×1
Max SPL	125±2dB
Sensitivity	98±2dB
Freq. Response	38Hz-160Hz
Dimensions	482×540×530mm
Net Weight	43.4kg

**LA1420S**  
18" Line Array Subwoofer



RMS Power	1000W
Impedance	8Ω
Driver Units	18" Woofer ×1
Max SPL	126±2dB
Sensitivity	96±2dB
Freq. Response	43Hz-250Hz
Dimensions	600×555×760mm
Net Weight	60kg

**LA1422S / LA1423S**  
18" Line Array Subwoofer



	LA1422S	LA1423S
RMS Power	800W	900W
Impedance	8Ω	8Ω
Driver Units	18" Woofer ×1	18" Woofer ×1
Max SPL	127±2dB	127±2dB
Sensitivity	99±2dB	99±2dB
Freq. Response	38Hz-220Hz	35Hz-220Hz
Dimensions	520×500×650mm	520×582×660mm
Net Weight	42kg	47kg

**LA1412S / LA1415S**  
Dual 18" Line Array Subwoofer



	LA1412S	LA1415S
RMS Power	1600W	1600W
Impedance	4Ω	4Ω
Driver Units	18" Woofer ×2	18" Woofer ×2
Max SPL	140±2dB	142±2dB
Sensitivity	104±2dB	110±2dB
Freq. Response	40Hz-200Hz	40Hz-200Hz
Dimensions	936×770×540mm	1123×812×540mm
Net Weight	75kg	79kg

**LA1426S / LA1428S**  
18" Line Array Subwoofer



	LA1426S	LA1428S
RMS Power	600W	800W
Impedance	8Ω	8Ω
Driver Units	15" Woofer ×1	18" Woofer ×1
Max SPL	125±2dB	131±2dB
Sensitivity	98±2dB	102±2dB
Freq. Response	50Hz-300Hz	35Hz-250Hz
Dimensions	449×573×570mm	642×620×489mm
Net Weight	40kg	46kg

**LA1421S**  
Dual 15" Line Array Subwoofer



RMS Power	1000W
Impedance	4Ω
Driver Units	15" Woofer ×2
Max SPL	134±2dB
Sensitivity	104±2dB
Freq. Response	32Hz-230Hz
Dimensions	779×685×521mm
Net Weight	60kg

**D6568**  
Dual 18" Line Array Subwoofer



RMS Power	1200W
Impedance	4Ω
Driver Units	18" Woofer ×2
Max SPL	137±2dB
Sensitivity	106±2dB
Freq. Response	35Hz-300Hz
Dimensions	582×1180×730mm
Net Weight	95kg

**D6569**  
18" Line Array Subwoofer



RMS Power	600W
Impedance	4Ω
Driver Units	18" Woofer ×1
Max SPL	130±2dB
Sensitivity	100±2dB
Freq. Response	45Hz-200Hz
Dimensions	690×561×595mm
Net Weight	45kg



D7732 / D7733 / D7734

10" / 12" Outdoor Line Array Loudspeaker



	D7732	D7733	D7734
RMS Power	400W	500W	800W
Impedance	8Ω	8Ω	8Ω
Driver Units	12"×1, 1"×1	10"×2, 1.4"×1	12"×2, 1.4"×2
Max SPL	124±2dB	128±2dB	134±2dB
Sensitivity	98±2dB	101±2dB	110±2dB
Freq. Response	60Hz-18kHz	70Hz-18kHz	60Hz-18kHz
Radiation Angle (H×V)	100°×Varies	90°×Varies	90°×Varies
Dimensions	621×346×428mm	550×396×770mm	700×524×931mm
Net Weight	25kg	27kg	46kg



D7735

Dual 12" Outdoor Line Array Subwoofer



RMS Power	600W
Impedance	8Ω
Driver Units	12"×2 woofer
Max SPL	126±2dB
Sensitivity	98±2dB
Freq. Response	50Hz-300Hz
Dimensions	700×524×931mm
Net Weight	40kg



D7736 / D7737 / D7738

Connection frame between subwoofer and loudspeaker



D7739

Rigging Frame for Subwoofer

- Wide Coverage Area: 90° in horizontal, and vertical depends on the number of full range speaker
- High Output Power: delivering high sound pressure levels
- Minimal Sound Loss: Special design, reducing sound loss over distance
- Scalability Application: Applied in differend kind of venues, stadium, sports ground etc.
- Weather Resistance: IP66 standard, suitable for outdoor use
- Reduced Feedback: hanging installation, more efficient
- Compact and Efficient Design: Plastic model

LA1408F

8" Full Frequency Outdoor Line Array Loudspeaker



RMS Power	200W
Impedance	16Ω
Driver Units	8"×1+1.75"×1
Max SPL	118±2dB
Sensitivity	95±2dB
Freq. Response	65Hz-18kHz
Radiation Angle (H×V)	100°×10°
Dimensions	210×530×340mm
Net Weight	17.5kg

LA1408SF

15" Outdoor Line Array Subwoofer



RMS Power	500W
Impedance	8Ω
Driver Units	15" Woofer ×1
Max SPL	125±2dB
Sensitivity	98±2dB
Freq. Response	38Hz-160Hz
Dimensions	482×540×530mm
Net Weight	43.4kg



LA1408F + LA1408SF

LA1421F

Dual 10" Full Frequency Outdoor Line Array Loudspeaker



RMS Power	600W
Impedance	8Ω
Driver Units	10"×2+3"×1
Max SPL	131±2dB
Sensitivity	103±2dB
Freq. Response	60Hz-20kHz
Radiation Angle (H×V)	120°×20°
Dimensions	780×474×306mm
Net Weight	26kg

LA1421SF

Dual 15" Outdoor Line Array Subwoofer



RMS Power	1000W
Impedance	4Ω
Driver Units	15" Woofer ×2
Max SPL	134±2dB
Sensitivity	104±2dB
Freq. Response	32Hz-230Hz
Dimensions	779×685×521mm
Net Weight	60kg



LA1421F + LA1421SF



DSP6050B / DSP6050W

50W Waterproof Outdoor Wall Mount Speaker with Power Tap



RMS Power	Impedance	Driver Units	Power Tap	Max SPL	Sensitivity	Freq. Response	Certificate	Dimension	Net Weight
50W	8Ω	6.5"x1, 1"x1	8Ω-50W-25W-12.5W-6.3W-3.2W	104±2dB	87±2dB	80Hz-20kHz	IP65	300x200x233mm	4.2kg

DSP8100S/DSP8200S

8" 80W Waterproof Wallmount Speaker with Power Tap



	RMS Power	Power Tap	Driver Units	Freq. Response	Sensitivity	Level	Material	Dimension	Net Weight
DSP8100S	80W	80W/40W/20W/10W/100W/8Ω	8"x1, 1"x2	60Hz-20kHz	92dB±2dB	IP55	ABS	282x186x465mm	7.5kg
DSP8200S	80W	80W/40W/20W/10W/200W/16Ω	8"x2, 1"x6	60Hz-20kHz	94dB±2dB	IP55	ABS	282x186x465mm	8.5kg

D6563 / D6564 / D6565 / D6566 / D6566A

8" / 10" / 12" / 15" Two-way Full Range Speaker



	RMS Power	Input Impedance	Driver Units	Max SPL	Sensitivity	Freq. Response	Radiation Angle (HxV)	Dimension	Net Weight
D6563	150W	8Ω	8"x1, 1.35"x1	117±2dB	95±2dB	80Hz-18kHz	90°x40°	430x240x235mm	9.7kg
D6564	250W	8Ω	10"x1, 1"x1	119±2dB	96±2dB	48Hz-18kHz	90°x40°	515x315x287mm	14.6kg
D6565	350W	8Ω	12"x1, 1.75"x1	123±2dB	98±2dB	55Hz-18kHz	90°x40°	610x364x385mm	23kg
D6566	450W	8Ω	15"x1, 1"x1	126±2dB	99±2dB	55Hz-18kHz	90°x40°	690x440x450mm	27.4kg
D6566A	800W	4Ω	15"x2, 1.75"x1	129±2dB	100±2dB	55Hz-20kHz	90°x40°	1100x440x450mm	51kg

D3A Ceiling & Wall Mount Kits  
(Suitable for D6563)



D5A Wall Mount Kits  
(Suitable for D6564/D6565/D6566)



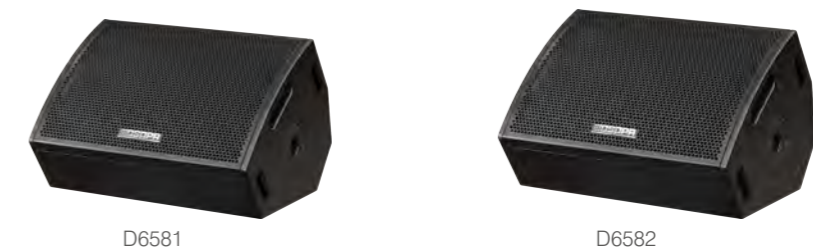
D6A Triangle Floor Stand Kit  
(Suitable for D6564/D6565/D6566)



	D3A	D5A	D6A
Material	Metal, Zinc Alloy	Metal, Steel Tube	Steel Tube, PC
Net Weight	765g	3.6kg	6kg
Bearing Weight	40kg	50kg	70kg

D6581 / D6582

Single 10" / 12" Professional Stage Monitor Speaker



	RMS Power	Impedance	Driver Units	Max SPL	Sensitivity	Freq. Response	Radiation Angle (HxV)	Dimension	Net Weight
D6581	250W	8Ω	10"x1, 1.35"x1	119±2dB	95±2dB	75Hz-19kHz	90°x80°	535x422x320mm	15.5kg
D6582	300W	8Ω	12"x1, 1.75"x1	122±2dB	97±2dB	70Hz-19kHz	90°x80°	590x467x340mm	21.5kg



D6526 / D6527 / D6528

8" / 10" / 12" Two-way Full Range Speaker



D6526

D6527

D6528

	RMS Power	Impedance	Driver Units	Max SPL	Sensitivity	Freq. Response	Radiation Angle (HxV)	Dimension	Net Weight
D6526	100W	8Ω	8"x1, 1"x1	112±2dB	93±2dB	85Hz-18kHz	70°x90°	430x265x231mm	8.2kg
D6527	150W	8Ω	10"x1, 1.35"x1	117±2dB	95±2dB	75Hz-18kHz	90°x90°	490x317x300mm	14kg
D6528	200W	8Ω	12"x1, 1.35"x1	117±2dB	96±2dB	70Hz-19kHz	90°x90°	600x374x350mm	18kg

D6533A / D6534A / D6535A / D6536A

8" / 10" / 12" / 15" Active Line Array Loudspeaker



D6533A

D6534A

D6535A

D6536A

	RMS Power	Input Impedance	Driver Units	Max SPL	Sensitivity	Freq. Response	Dimension	Net Weight
D6533A	180W	20kΩ	8"x1, 1.3"x1	118±2dB	95±2dB	70Hz-18kHz	465x282x275mm	12kg
D6534A	250W	20kΩ	10"x1, 1.3"x1	120±2dB	96±2dB	65Hz-18kHz	505x320x313mm	15kg
D6535A	350W	20kΩ	12"x1, 1.4"x1	123±2dB	97±2dB	62Hz-18kHz	580x380x372mm	21kg
D6536A	450W	20kΩ	15"x1, 1.75"x1	125±2dB	98±2dB	60Hz-18kHz	696x456x446mm	28kg

D6594 / D6595 / D6596 / D6597

10" / 12" / 15" Two-way Full Range Speaker



D6594

D6595

D6596

D6597

	RMS Power	Impedance	Driver Units	Max SPL	Sensitivity	Freq. Response	Radiation Angle (HxV)	Dimension	Net Weight
D6594	250W	8Ω	10"x1, 1.75"x1	119±2dB	95±2dB	65Hz-19kHz	90°x60°	510x330x320mm	18kg
D6595	350W	8Ω	12"x1, 1.75"x1	122±2dB	97±2dB	60Hz-19kHz	90°x60°	635x385x390mm	24kg
D6596	450W	8Ω	15"x1, 3"x1	126±2dB	99±2dB	58Hz-19kHz	90°x60°	716x450x444mm	28kg
D6597	900W	4Ω	15"x2, 3"x1	130±2dB	100±2dB	48Hz-19kHz	100°x40°	1104x450x444mm	42kg

LA1230S / LA1535S

12" / 15" Active Subwoofer



LA1230S

LA1535S

	RMS Power	Impedance	Driver Units	Max SPL	Sensitivity	Freq. Response	Power Supply	Dimension	Net Weight
LA1230S	200W	8Ω	12"x1	126±2dB	94±2dB	45Hz-300Hz	AC220V/50Hz	455x380x485mm	22kg
LA1535S	300W	8Ω	15"x1	122±2dB	95±2dB	45Hz-300Hz	AC220V/50Hz	540x460x510mm	26kg



DSP6120 / DSP6180 / DSP6240

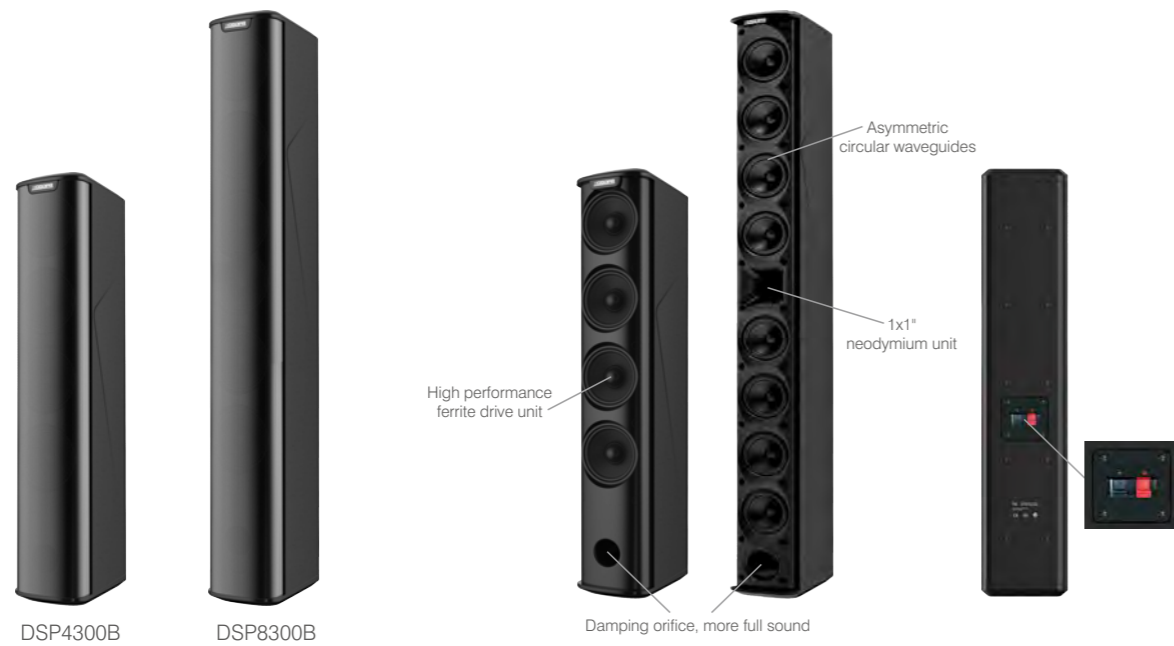
120W / 180W / 240W Professional Conference Column Speaker



	RMS Power	Impedance	Driver Units	Max SPL	Sensitivity	Freq. Response	Dimension	Net Weight
DSP6120	120W	8Ω	4.5"x4, 1"x1	112dB±2dB	91dB±2dB	95Hz-18kHz	610x140x155mm	7.8kg
DSP6180	180W	5.3Ω	4.5"x6, 1"x1	114dB±2dB	92dB±2dB	95Hz-18kHz	880x140x155mm	11.5kg
DSP6240	240W	4Ω	4.5"x8, 1"x1	117dB±2dB	93dB±2dB	95Hz-18kHz	1100x140x155mm	14.1kg

DSP4300B / DSP8300B

100W / 270W Array Loudspeaker



	RMS Power	Impedance	Driver Units	Max SPL	Sensitivity	Freq. Response	Radiation Angle (HxV)	Dimension	Net Weight
DSP4300B	100W	8Ω	3"x4	116dB	91dB	80Hz-20kHz	120°x20°	530x100x150mm	3.8kg
DSP8300B	270W	4Ω	3"x8, 1"x1	124dB	93dB	100Hz-20kHz	160°x30°	934x98x150mm	4.85kg

DSP8040 / DSP8050

40W 6" / 50W 8" Coaxial Ceiling Speaker with Power Tap



	RMS Power	Impedance	Driver Units	Power Tap	Sensitivity	Freq. Response	Material	Installation	Cut-out Size	Dimension	Net Weight
DSP8040	40W	8Ω	6"x1, 1"x1	8Ω-40-20-10-5W	87dB	60Hz-20kHz	ABS	Rotating Clip	Ø209mm	Ø248.5x108mm	2.5kg
DSP8050	50W	8Ω	8"x1, 1"x1	8Ω-50-25-12.5-6.25W	87dB	43Hz-20kHz	ABS	Rotating Clip	Ø249mm	Ø285.5x121mm	2.9kg

DSP915D / DSP916D / DSP918D

20W / 40W / 60W Coaxial Ceiling Speaker



	RMS Power	Impedance	Driver Units	Max SPL	Sensitivity	Freq. Response	Material	Installation	Cut-out Size	Dimension	Net Weight
DSP915D	20W	8Ω	5"x1, 1"x1	103±2dB	90±2dB	60Hz-20kHz	Aluminum, Iron	Rotating Clip	Ø170mm	Ø190x223mm	2.9kg
DSP916D	40W	8Ω	6.5"x1, 1"x1	107±2dB	91±2dB	50Hz-20kHz	Aluminum, Iron	Rotating Clip	Ø200mm	Ø231x241mm	4.2kg
DSP918D	60W	8Ω	8"x1, 1"x1	110±2dB	92±2dB	45Hz-20kHz	Aluminum, Iron	Rotating Clip	Ø245mm	Ø273x270mm	5.7kg

DSP159

High Definition Coaxial Ceiling Speaker with Power Tap



	RMS Power	70V	100V	8Ω	Driver Units	Max SPL	Sensitivity	Freq. Response	Material	Installation	Cut-out Size	Dimension	Net Weight
DSP159	30W	1.9-7.5-30W	3.8-15-30W	30W	6.5"x1, 2.5"x1	111±2dB	96±2dB	100Hz-20kHz	Aluminum, Iron	Rotating clip	Ø232-242mm	Ø261x230mm	4kg



D6077B / D6078B / D6079B

8" / 12" / 15" Remote Horn Speaker



D6077B

D6078B

D6079B

	RMS Power	Impedance	Driver Units	Max SPL	Sensitivity	Freq. Response	Directivity (HxV)	Dimension	Net Weight
D6077B	150W	8Ω	8"x1, 1.35"x1	122dB±2dB	100dB±2dB	110Hz-18kHz	90°×60°	360x360x455mm	12.5kg
D6078B	350W	8Ω	12"x1, 1.75"x1	130dB±2dB	105dB±2dB	100Hz-18kHz	60°×40°	580x580x760mm	39.5kg
D6079B	400W	8Ω	15"x1, 3"x1	135dB±2dB	109dB±2dB	85Hz-18kHz	60°×40°	580x580x760mm	46.5kg

DSP3008H / DSP3010H / DSP3012H

8" / 10" / 12" All-weather Compact Coaxial Horn Loudspeaker



DSP3008H

DSP3010H

DSP3012H



Coaxial speaker unit

Power tap & speaker terminal

U-shape bracket

	RMS Power	Input	Driver Units	Sensitivity	Max SPL	Freq. Response	Material	Dimension	Net Weight
DSP3008H	120W	70V/100V/8Ω	8"x1, 1.5"x1	101±3dB	110dB	80Hz-18kHz	ABS, Aluminum	312x260x302mm	9.1kg
DSP3010H	200W	70V/100V/8Ω	10"x1, 1.5"x1	103±3dB	117dB	70Hz-18kHz	ABS, Aluminum	355x348x385mm	13.5kg
DSP3012H	300W	70V/100V/8Ω	12"x1, 1.5"x1	103±3dB	119dB	70Hz-20kHz	ABS, Aluminum	435x375x395mm	20.3kg

DDA23D / DDA43D

IP Network Digital Amplifier with DSP and Dante



DDA23D



DDA43D

- IP network amplifier with dante
- Support 70V/100V or 4-8Ω signal output
- Rated power 2x500W@4Ω, 4x500W@4Ω
- Built-in DSP processor
- Support USB, TCP/IP, RS232, RS485
- The working status of amplifier could be monitored remotely in real time
- Support XLR balanced input and RCA unbalanced input
- Support stereo, bridge, mono channel, free matrix mode, one-key to switch
- Input sensitivity adjustable 0dBu/6dBu, setting from software or LCD screen
- Controlled by software, could also control matrix system and professional processor

DDA23 / DDA43A

IP Network Digital Amplifier with DSP

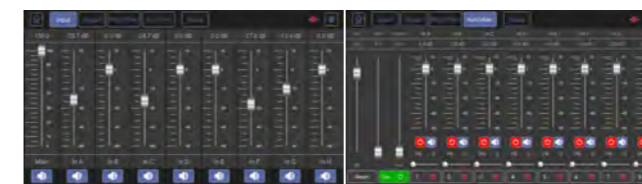


DDA23



DDA43A

- IP network amplifier
- Support 70V/100V or 4-8Ω signal output
- Rated power 2x500W@4Ω, 4x500W@4Ω
- Built-in DSP processor
- Support USB, TCP/IP, RS232, RS485
- The working status of amplifier could be monitored remotely in real time
- Support XLR balanced input and RCA unbalanced input
- Support stereo, bridge, mono channel, free matrix mode, one-key to switch
- Input sensitivity adjustable 0dBu/6dBu, setting from software or LCD screen
- Controlled by software, could also control matrix system and professional processor



Android Software



PC Software

	RMS Power	Bridge Power	Gate	Sample Rate	Freq. Response	Maximum Input Level
DDA23 / DDA23D	2x500W@4Ω / 2x300W@8Ω	1x900W@8Ω	0dB(36dB); 6dB(30dB)	48K / 24bit	20Hz-20kHz(±0.5dB)@1W	0dB(8dBu); 6dB(14dBu)
DDA43A / DDA43D	4x500W@4Ω / 4x300W@8Ω	2x900W@8Ω	0dB(36dB); 6dB(30dB)	48K / 24bit	20Hz-20kHz(±0.5dB)@1W	0dB(8dBu); 6dB(14dBu)



DK6915 / DK6925 / DK6935 / DK6950 / DK6965  
2 Channels Digital Stereo Conference Mixer Amplifier



- Rated power: 2x250W/2x250W/2x350W/2x500W/2x650W
- With 2 channels 6.3mm microphone inputs and 2 channels XLR balanced microphone inputs
- Each mic input with independent volume adjustment and mixing processing function and 10 equalization adjustment
- XLR microphone with phantom power +48V
- With 3 audio (stereo) input, 1 stereo output, with volume, bass, treble and equalization adjustment for audio input
- With audio source selection (line input / MP3)
- Audio from three Aux in and MP3/BT and microphone could be mixing output. Pre-set EQ effect: NORMAL, POP, ROCK, JAZZ, CLASSIC, COUNTRY
- With master volume adjustment
- Support bluetooth/USB/Micro SD card, with independent volume control and 10 bands digital EQ adjustment
- With DC output protection, overload protection, short circuit protection and overheat protection
- With 2.8" LCD screen, backlight time could be customized
- With 2 kind of output interface: SPEAKON and terminal

	DK6915	DK6925	DK6935	DK6950	DK6965
Rated Power	2x150W / 8Ω 2x250W / 4Ω	2x250W / 8Ω 2x350W / 4Ω	2x350W / 8Ω 2x550W / 4Ω	2x500W / 8Ω 2x750W / 4Ω	2x650W / 8Ω 2x950W / 4Ω
Microphone Input Sensitivity	5mV-250mV adjustable				
Line Input Sensitivity	250±25mV				
MP3 Input	-10dB/1KHZ				
Line Output Voltage	1000±100mV				
Total Harmonic Distortion	≤0.5 (1KHz, under normal operating conditions)				
Line Frequency Response	20-20kHz (±3dB)				
Microphone Frequency Response	80-20kHz (±3dB)				
S/N Ratio (A-weighted)	≥85dB				
Operating Power	AC220V/50-60Hz				
Phantom Voltage	+48±5V				
Dimension (L×W×H)	430x360x88mm	430x360x88mm	430x360x88mm	430x390x88mm	430x390x88mm
Net Weight	5.45kg	5.95kg	6.75kg	7.8kg	7.9kg

DX1000 / DX1500 / DX2000 / DX2500 / DX3000 / DX3500 / DX4000  
2 Channels Professional Stereo Digital Power Amplifier



- Dual channels professional stereo power amplifier
- 3 output modes switchable: mono, stereo, BTL bridge
- Each channel with individual volume control
- With XLR and 6.35mm phone jack for audio input
- Each channel with LED indicator for working status
- With protection of short circuit, DC power, high temperature, etc.
- With protection of power shock, avoid damage to electricity grid and audio equipment

	DX1000	DX1500	DX2000	DX2500	DX3000	DX3500	DX4000
Rated Power (8Ω/4Ω)	150W / 250W	230W / 350W	300W / 450W	400W / 700W	650W / 950W	800W / 1200W	1000W / 1500W
Input Sensitivity	1VRMS						
S/N Ratio	90dB						
Input Common Mode	>90dB						
Frequency Response	20Hz-20kHz (±3dB)						
Harmonic Distortion	< 0.3% (Under normal working conditions)						
Channel Impedance	4-16Ω						
Channel Crosstalk	<-70dB						
Power Supply	AC220V/50Hz						
Dimensions (L×W×H)	483×396×88mm		483×396×88mm		483×496×88mm		
Net Weight	6.5kg		7.7kg		13.5kg		

D5411 / D5412 / D5413 / D5414 / D5415  
4 Channels Professional Power Amplifier



- With display screen design
- Rated power: 4x700W@8Ω, 4x1400W@4Ω
- With built-in 4 channels of analog inputs
- Adopt PWM ultra-high-power design
- With 0.7V and 1.4V input signal conversion

	D5411	D5412	D5413	D5414	D5415
Rated Power (8Ω)	4x600W	4x800W	4x1000W	4x1300W	4x1500W
Input Level	0.77V & 1.44V				
Input Connector	XLR female				
Input Impedance	20KΩ balanced				
Input CMRR	> 80dB				
SNR	> 112dB				
Damping Factor	> 1000 @ 8Ω				
THD	< 0.1% (20Hz-20kHz 1W)				
Frequency Response	20Hz-20kHz (+0/-0.3dB, 1W/8Ω)				
Power Supply	AC180-240V 50-60Hz				
Dimensions (W×L×H)	483×419×88mm				



MX1000II / MX1500II / MX2000II / MX2500II

Professional Stereo Power Amplifier



MX1000II/MX1500II/MX2000II/MX2500II

- Dual channels professional stereo power amplifier
- 3 output modes switchable: mono, stereo, BTL bridge
- Each channel with individual volume control
- With XLR and 6.35mm phone jack for audio input
- Each channel with LED indicator for working status
- With protection of short-circuit, DC current, high temperature, etc.
- With protection of power shock, avoid damage to electricity grid and audio equipment

	RMS Power(8Ω)	RMS Power(4Ω)	RMS Power(BTL, 8Ω)	Input Sensitivity	Freq. Response	SNR	THD	Dimension	Net Weight
MX1000II	150W	250W	500W	600mV	20Hz-20kHz (±3dB)	≥100dB	<0.1%	484x446x88mm	15.2kg
MX1500II	230W	350W	700W	700mV	20Hz-20kHz (±3dB)	≥100dB	<0.1%	484x446x88mm	16.8kg
MX2000II	300W	450W	900W	800mV	20Hz-20kHz (±3dB)	≥100dB	<0.1%	484x446x88mm	21kg
MX2500II	400W	700W	1400W	1000mV	20Hz-20kHz (±3dB)	≥100dB	<0.1%	484x446x88mm	23.5kg

MX3000II / MX3500II / MX4000II

Professional Stereo Power Amplifier



MX3000II/MX3500II/MX4000II

- Dual channels professional stereo power amplifier
- 3 output modes switchable: mono, stereo, BTL bridge
- Each channel with individual volume control
- With XLR and 6.35mm phone jack for audio input
- Each channel with LED indicator for working status
- With 35Hz frequency low cut when necessary, can protect output speakers
- With protection of short circuit, DC power, high temperature, etc.
- With protection of power shock, avoid damage to electricity grid and audio equipment

	RMS Power(8Ω)	RMS Power(4Ω)	RMS Power(BTL, 8Ω)	Input Sensitivity	Freq. Response	SNR	THD	Dimension	Net Weight
MX3000II	650W	950W	1500W	1.0V	20Hz-20kHz (±1dB)	≥98dB	<0.1%	484x460.5x88mm	16kg
MX3500II	800W	1200W	2100W	1.0V	20Hz-20kHz (±1dB)	≥98dB	<0.1%	484x460.5x88mm	18kg
MX4000II	1000W	1500W	2800W	1.0V	20Hz-20kHz (±1dB)	≥98dB	<0.1%	484x460.5x88mm	23kg

DMX08 / DMX12 / DMX16

8/12/16 Channels Professional Audio Mixer



DMX08

DMX12



DMX16

- 8/12/16 channels XLR balance mono channel input, low noise
- Each channel with 3 EQ adjustment, mute switch, 60mm smooth fader attenuator
- 1 stereo line output +2 AUX outputs (including FX)
- 1 return output, 1 RAC output
- Built-in 48V phantom power supply
- Built-in 16 DSP digital effects
- USB audio play MP3; support USB recording
- Support Bluetooth function
- The LED display is clearly displayed
- Ten three-color level lamp display
- Applicable to 30 watts of global power supply voltage; use flexible. With no noise, the instant reaction is good, the power consumption is low

CM208 / CM212 / CM216 / CM224

8/12/16/24 Channels Professional Mixer with 2 Groups Output



CM208



CM212



CM216



CM224

- Support 6/10/14/22 channels XLR mono input and 2 channels stereo input
- Each channel with 3 bands EQ adjustment, Mute switch, PFL ear phone switch
- Support 2 groups output, and 2 AUX (including FX)
- Support 1 channels feedback and 1 monitoring output
- Built-in phantom power 48V
- Built-in 24 DSP digital effect processor
- Built-in USB port for recording and music playing
- Built-in bluetooth
- LED screen for status display



## CM412 / CM416 / CM424

12/16/24 Channels Professional Mixer with 4 Groups Output



CM412

CM416



CM424

- Support 8/12/20 channels XLR mono input and 4 channels stereo input
- Each channel with 3 bands EQ adjustment, Mute switch, PFL ear phone switch
- Support 4 groups output, and 4 AUX (including EFF)
- Support 1 channels feedback and 1 monitoring output
- Built-in phantom power 48V
- Built-in 24 DSP digital effect processor
- Built-in USB port for recording and music playing
- Built-in bluetooth
- LED screen for status display

## CM212F

12 Channels Input Mixer with Rack Mounted



- Support 12 channels XLR mono input and 2 channels stereo input
- Each channel with 3 bands EQ adjustment, Mute switch, PFL ear phone switch
- Support 2 groups output, and 2 AUX (including FX)
- Support 1 channels feedback and 1 monitoring output
- Built-in phantom power 48V
- Built-in 16 DSP digital effect processor
- Built-in USB port for recording and music playing
- Built-in bluetooth
- LED screen for status display
- Could be mounted in 19" rack

## CM16 / CM24 / CM32

16/24/32 Channels Digital Mixing Console



CM16



CM24 / CM32

- 7"(CM16) / 10"(CM24/CM32) resistive touch screen 1024×600 resolution
- With built-in USB recording and playback functions
- Support playback of APE, FLAC, MP3, WAV lossless audio formats
- With built-in 16-channel independent feedback suppressors
- Support iPad touch screen full-featured control, and real-time data synchronization
- With optional WIFI hotspot
- Support 8 terminals to control simultaneously
- With 4-band parametric EQ, noise gate, feedback suppressor, high and low pass, compressor, and inverter for each input channel
- With 8-band parametric EQ, high and low pass, compressor, and inverter for each output channel
- With output channels: L/R, 6 BUS, 2 AUX, HeadPhone(L/R)
- Can select pre-fader or post-fader (PRE/POST) for 6 BUS and 2 AUX mix bus(CM16) / 10 BUS(CM24/CM32)
- Support 32 PEQ modes storage
- With built-in signal generator: sine wave, pink noise, white noise

## CM1608

Portable Digital Mixing Console



- 16 inputs (8 balanced XLR/TRS digital gain channels, 2 sets (4 channels) of stereo inputs, 2 high-resistance mono inputs, 2 USB playback channels)
- 7-inch high-definition touch screen
- The operating panel consisting of a digital encoder and dedicated keys enables all settings to be made quickly
- 5 built-in effects for singing and performing
- The device comes with classic reverb, chorus, modulation and other effect modules
- FX effects can be used to return to the mix using a dedicated return channel and does not occupy the mono and stereo input channels
- Can store 100 complete scenes, all the scenes can be exported to an external storage device for storage backup, in order to later



### D6648 / D6688 / D6692 / D6696

4/8/12/16 Channels Professional Audio Processor



D6648



D6688



D6692



D6696

- 4/8/12/16 analog inputs, 8/12/16 analog outputs
- Support free switching between microphone input and line input
- With a 48V phantom power supply for each input, controlled by a web switch
- With input/output level setting, signal generator, delay, noise gate, limiter, etc
- With matrix mixing control
- Allow maximum delay time of 1500ms
- Support TCP/IP for various parameter control on the web side
- With RS-232, RS-485 and GPIO interfaces for complete control functions
- With 5-band PEQ adjustable for the input and 9-band PEQ adjustable for the output
- Support fast switching of multiple scene modes

	Input No.	Output No.	THD	S/N Ratio	Freq. Response	Dimension	Net Weight
D6648	4	8	-85dB (1kHz, A-wt)	95dB (1kHz, A-wt)	20Hz-20kHz (±1dB)	482x265x44.4mm	3.35kg
D6688	8	8	-85dB (1kHz, A-wt)	95dB (1kHz, A-wt)	20Hz-20kHz (±1dB)	483x250x44.5mm	3.35kg
D6692	12	12	-85dB (1kHz, A-wt)	95dB (1kHz, A-wt)	20Hz-20kHz (±1dB)	483x250x44.5mm	3.35kg
D6696	16	16	-85dB (1kHz, A-wt)	95dB (1kHz, A-wt)	20Hz-20kHz (±1dB)	483x250x44.5mm	3.35kg

### D6675 Digital Audio Processor



- 2-inch high-definition LCD display, multifunctional adjustable knob, mute and editing status
- Support 48KHz sampling frequency
- Built-in 32-bit DSP processor, support 24-bit A/D and D/A conversion
- Support 2 optional audio signal inputs, 6 audio signal outputs and 5 microphone inputs (of which 1/4 and 2/5 are optional)
- Support USB flash drive MP3 playback, support Bluetooth playback
- Each output has delay and phase control and mute setting
- Input channel supports control gain adjustment, noise gating, compression and equalization
- Output channel supports control gain adjustment, voltage limitation, equalization, etc.
- Supports connecting to a computer to control the device through the PC control web page

### D6642H / D6643H / D6644H / D6642HD / D6643HD / D6644HD

8/12/16 Channels Digital Audio Processor



D6642H



D6643H



D6644H



D6642HD



D6643HD



D6644HD

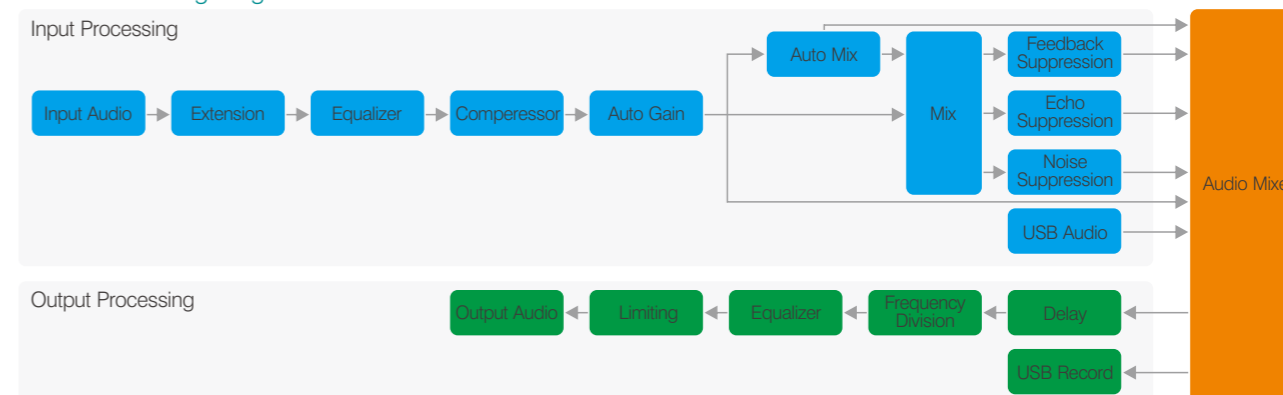


System Set-up Via Computer

The D6642H series is an intelligent audio matrix with fully digital audio processing. Along with the suppression of feedback, noise and echo, it can reproduce the sound with high quality. It is an ideal audio processing solution for venues where high quality sound is needed such as conference meeting, stage, stadium, church, etc.

- 8/12/16 balanced audio input of phoenix jacks
- 8/12/16 balanced audio output of phoenix jacks
- 24bit/48kHz sampling, high efficiency A/D & D/A converter
- Advanced audio processing of EQ, frequency filter, feedback, noise, echo, etc.
- 1 RJ 45 interface to link with computer for system set up
- 1 RS232 interface to third devices such as audiovisual matrix, camera, etc.
- 10 GPIO Input interface, 4 GPIO Output interface
- With built in PC software, no need to install or download from network
- 1U slim design, suitable for 19" rack mounting
- D6642HD/D6643HD/D6644HD support Dante function
- Power supply: AC 180V-250V

#### Audio Processing Diagram



	Input No.	Output No.	Input Impedance	Output Impedance	Freq. Response	THD	Dimension	Net Weight
D6642H	8	8	20kΩ/balance, 10kΩ/unbalance	100Ω/balance, 50Ω/unbalance	20-20kHz (±0.25dB)	≤0.002% @1kHz, +4dBu	483x250x44.5mm	4kg
D6643H	12	12	20kΩ/balance, 10kΩ/unbalance	100Ω/balance, 50Ω/unbalance	20-20kHz (±0.25dB)	≤0.002% @1kHz, +4dBu	483x250x44.5mm	4kg
D6644H	16	16	20kΩ/balance, 10kΩ/unbalance	100Ω/balance, 50Ω/unbalance	20-20kHz (±0.25dB)	≤0.002% @1kHz, +4dBu	483x250x44.5mm	4kg
D6642HD	8	8	20kΩ/balance, 10kΩ/unbalance	100Ω/balance, 50Ω/unbalance	20-20kHz (±0.25dB)	≤0.002% @1kHz, +4dBu	483x250x44.5mm	4kg
D6643HD	12	12	20kΩ/balance, 10kΩ/unbalance	100Ω/balance, 50Ω/unbalance	20-20kHz (±0.25dB)	≤0.002% @1kHz, +4dBu	483x250x44.5mm	4kg
D6644HD	16	16	20kΩ/balance, 10kΩ/unbalance	100Ω/balance, 50Ω/unbalance	20-20kHz (±0.25dB)	≤0.002% @1kHz, +4dBu	483x250x44.5mm	4kg



## DSP848

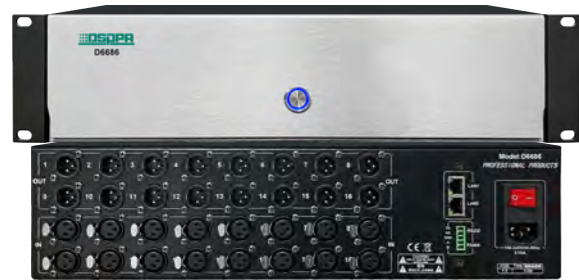
### High-end Professional 4-input 8-output Audio Processor



- 4 audio input and 8 audio output
- 32bit/96kHz sampling
- EQ, frequency filter, feedback, noise, echo
- With RJ45, RS232, RS485 interface
- Input impedance 20kΩ, Output impedance: 600Ω
- 1U slim design, suitable for 19" rack mounting
- Power supply: AC220V

## D6686

### Immersive Audio Processor



- Built-in high-performance DSP patented immersive acoustic algorithm
- The product has 16 XLR inputs and 16 XLR outputs
- It has the function of positioning and adjusting 16 input signals at the same time
- Software operations take effect in real time, improving ease of operation
- The user interface can adjust the sound source trajectory, preset trajectory and volume adjustment
- Suitable for all kinds of conference rooms, museums

## DP8001

### 8 Channels Audio Matrix



- 8 channels analog input & 8 channels analog output
- Each input with phantom 48V power switch
- Each input with feedback suppressor, two levels adjustment
- With automatic mixing and matrix mixing functions
- 31 bands PEQ adjustment for input and 10 bands PEQ adjustment for output
- Support remote control via PC software or mobile APP

## DP800F

### Touch Screen Control Panel



- Master volume adjustment
- Support each input and output volume adjustment
- Support archive call function
- 4" screen, with RS485 interface
- Resolution ratio: 320\*240
- Dimension 86x86x27.5mm

## DP8050

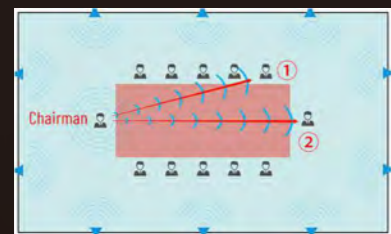
### 8-In 8-Out Professional AI Audio Processor



- With 8 analog balanced inputs and 8 analog balanced outputs
- With 48V phantom power per input channel
- With microphone amplifier per input channel
- With stereo USB sound card function for playback and recording
- With USB port for computer software control and USB sound card transfer function
- With RS232 and RS485 serial port
- With 8 external GPIO ports
- With a variety of DSP functions
- With 15-band PEQ for the input and 10-band PEQ for the output
- With 512 Tap FIR per output channel
- With 60 preset memory points
- Support Android APP network control



Disadvantages of Traditional Sound System



Conference Sound Reinforcement Application

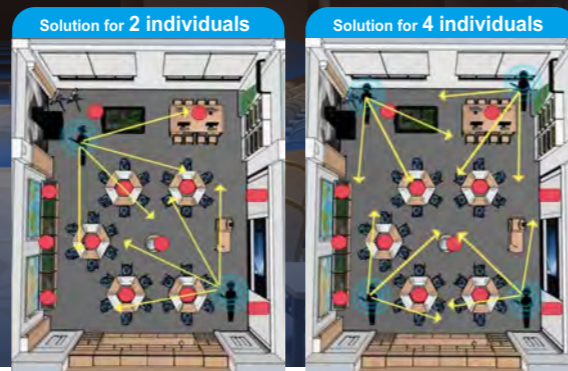
### Sound Follows the Movements, Voice Points the Way.

The system uses the three-dimensional layout processing algorithm of speakers and sound sources developed by DSPPA. Through complex data processing, it achieves high-precision sound source localization and spatial sound field control, **which enables the audience to clearly identify the speaker's direction through the sound system**, fully facilitating a complete immersion in the event's atmosphere.

Independent tracking and positioning for up to **16 individuals**  
Project Reference | Device Space Modeling



Web control





## DP4004

### 4 Channels Conference Audio Processor with ANC & AEC



- 4 channels analog audio input & 4 channels analog audio output
- With AEC echo cancellation and ANC noise cancellation function
- With USB, RS232, RS485, RJ-45 port for computer control and central control
- Each input with 48V phantom power and feedback suppressor
- With 8 channels GPIO interface
- With DSP function
- Stereo USB sound card function, support playback and recording
- With 15 bands PEQ adjustment for input and 10 bands PEQ adjustment for output
- With video tracking function, support PELCO-D, PELCO-P, VISCA protocols
- USB drive automatic connect with software, and support RS232 control
- Support remote control of mobile APP software
- Power supply: AC100V-240V 50/60 Hz

## DP8008 / DP8084 / DP8016 / DP1680 / DP1684 / DP1686

### 8/16 Channels Conference Audio Processor with 4x4/16x16 Dante



DP8008 / DP8084 / DP8016

DP1680 / DP1684 / DP1686

- DP8008/DP8084/DP8016 with 8 channels analog audio input & 8 channels analog audio output
- DP1680/DP1684/DP1686 with 8 channels analog audio input & 8 channels analog audio output
- DP8084/DP1684 with 4x4 dante input and output
- DP8016/DP1686 with 16x16 dante input and output
- With AEC echo cancellation and ANC noise cancellation function
- With USB, RS232, RS485, RJ-45 port for computer control and central control
- Each input with 48V phantom power and feedback suppressor
- With 8 channels GPIO interface
- With DSP function
- Stereo USB sound card function, support playback and recording
- With 15 bands PEQ adjustment for input and 10 bands PEQ adjustment for output
- With video tracking function, support PELCO-D, PELCO-P, VISCA protocols
- USB drive automatic connect with software, and support RS232 control
- Support remote control of mobile APP software
- Power supply: AC100V-240V 50/60 Hz

## DP7008 / DP1580 / DP1586

### 8/16 Channels Conference Audio Processor



DP7008

DP1580 / DP1586

- DP7008 with 8 channels analog audio input & 8 channels analog audio output
- DP1580/DP1586 with 16 channels analog audio input & 16 channels analog audio output
- DP1586 with 16x16 dante input and output
- With AEC echo cancellation and ANC noise cancellation function
- With USB, RS232, RS485, RJ-45 port for computer control and central control
- Each input with 48V phantom power and feedback suppressor
- With 8 channels GPIO interface
- With DSP function
- Stereo USB sound card function, support playback and recording
- With video tracking function, support PELCO-D, PELCO-P, VISCA protocols
- USB drive automatic connect with software, and support RS232 control
- Support remote control of mobile APP software
- Power supply: AC100V-240V 50/60Hz

## DP409

### 4 Input / 8 Output Professional Audio Processor



- Sampling frequency 96k 24Bit
- 15 bands PEQ input and 10 bands PEQ output
- Allpass filter, all of the input and output channels have 48-level high-low frequency dividers
- Finite impulse response filter FIR, can realize the phase correction function
- USB drive-free automatic connect with software, RS232 central control and TCP/IP LAN remote control are also supported
- Support Mconsole software network management
- Support file encryption function, convenient factory default speaker parameters
- Support APP wireless control of Android system
- Power supply: AC100V-240V 50/60Hz



## D6576

### Automatic Feedback Suppressor



- 2 channels auto feedback suppressor
- Built-in high-end high-speed floating point digital signal processor and adaptive feedback notch processing algorithm technology
- XLR and RCA interfaces for audio inputs and outputs  
Panel with quick buttons for channel mute, bypass and filter reset
- 4\*8 segments of real-time level display indicator
- Each input has 15 adaptive notch filters
- TCP/IP control protocol
- Support multi-gear analog volume adjustment
- With RS232 and RJ-45 interface for communication

## D2100F

### Digital Feedback Suppressor



- Adopt a high-performance professional audio processor
- With 4 balanced/unbalanced microphone inputs and 1 balanced/unbalanced output
- With 1 line signal input and 1 line signal output
- With a TFT color screen for displaying spectrum signals and operating status
- With signal level indication and BYPASS/ACTIVE switch
- With 48V phantom power switch and separate volume control for 4 microphone inputs

## MAG2107C

### Multifunctional CD Player with Bluetooth



- Supports CD/USB/SD card
- Imported digital movement is adopted, system+ESS decoding scheme and super error correction function
- Microcomputer control with light touch button
- Supports FM/AM digital radio
- Stereo radio, CD/MP3, bluetooth L/R output
- Mixed audio output
- FM/AM radio can store 40 stations respectively
- LCD displays working status of CD, MP3, radio, bluetooth

## MAG2123S

### 8 Channels Power Supply Sequence Controller



- Sequentially switching power supply for 8 channels
- Step time: 0.4S-0.5S
- Power capacity: 220V, 10A
- Max output of each socket is 10A
- Total input current capacity is 10A
- Universal socket, suitable for different types of plugs
- Turn on/off the amplifier in sequence to avoid high current to damage the amplifier or the power supply system

## D6578

### 8 Channel Power Supply Sequency Controller



- 8 channels individual big power output
- Universal socket, can meet the needs of various types of plug
- Each channel Max current 10A output
- Each channel will be turned on/off in order, so as to protect the power grid
- Support RS232 RS485 and central control protocol
- Aluminum fashionable panel, 1 U slim design, suitable for rack mounting
- Power supply: AC 220-240V/50-60Hz/20A

## D6572II

### 8 Channels Power Supply Sequence Controller



- 8 channels individual big power output
- Universal socket, can meet the needs of various types of plug
- Total Max current 16A, each channel Max current 10A
- Each channel will be turned on/off in order, so as to protect the power grid
- With activating trigger of 6.3mm phone jack interface
- Aluminum fashionable panel, 1 U slim design, suitable for rack mounting
- Power supply: AC 220-240V/50-60Hz/20A

## D6720

### Intelligent Power Controller



- 8 channels individual power output, each channel 10A/16A
- 2 channels of direct power supply in front panel, each channel 10A
- Universal socket, can meet the needs of various types of plug
- With 2.4" LCD display screen
- Each channel Max current 16A output in rear panel
- Each channel will be turned on/off in order, so as to protect the power grid
- With RS485 serial port to connect with the central control system
- Power supply: AC 220V/50Hz/25A



**D5816**  
4 Channels Wireless Microphone Receiver



- 4 channels True Diversity microphone system, connect with 4 microphones
- PLL digital automatic communication function
- Adopt IR frequency pairing
- With screen to display working status, like frequency, channel, squelch and electrical level
- With volume control for each channel
- With XLR interface for output
- Frequency range: 632-695.25MHz
- Working distance up to 200 meters

**D5830**  
Professional Condenser Microphone



- Can suppress lateral ambient noise greater than 80dB
- Metallic texture with tempered glass inlay
- Zinc alloy die-casting, oxidized processing on the surface
- Distinctive directional characteristics in the vocal speech frequency band (100-12KHz)
- Powered by 48V phantom power supply
- Support balanced output
- With low AC internal resistance, and strong anti-interference capability

**D5837 / D5838**  
Dual / Four Poles Lecture Microphone



Diaphragm Diameter	25mm
Capsule Type	Condenser
Freq. Response	20Hz-20kHz
Sensitivity	25mV/Pa
Polar Pattern	Hyper-cardioid
Max SPL	150dB
Dynamic range	130dB
Power Supply	Phantom power 48V

**D5832 / D5833**  
Diaphragm Microphone



Diaphragm diameter	16mm
Freq. Response	20-20KHz
Sensitivity	25mV/Pa
Polar Pattern	Hyper-cardioid
Max SPL	150dB
Dynamic range	130dB
Power supply	Phantom power 48V
Power consume	4mA

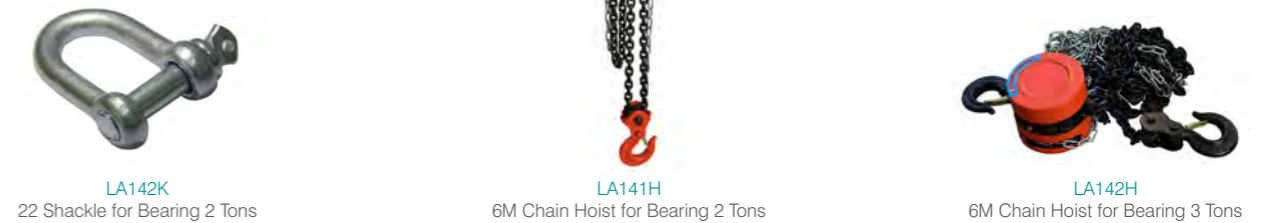
**D1.2A / D1.2B / D1.2C / D1.2D / D1.2E**  
Connector (1.2m length)



**LA141N / LA142N**  
Flat Nylon Webbing Sling



**LA142K / LA141H / LA142H**  
Shackle/Chain Hoist



**D3A / D5A / D6A / D7A**  
Professional Speaker Bracket/Stand



	D3A	D5A	D6A	D7A
Material	Metal, Zinc Alloy	Metal, Steel Tube	Steel Tube, PC	All-Metal
Net Weight	765g	3.6kg	6kg	3.25kg
Bearing Weight	40kg	50kg	70kg	/