

DSP124

Ceiling Speaker



Description

This The DSP124 is a ceiling speaker with a 70V/100V transformer built in. The 70V/100V transmission is realized in a high-voltage, low-current mode, which makes longer distance transmission and parallel connection of multiple loudspeakers possible.

The built-in 6.5" speaker driver is designed of wide frequency response 90-20,000Hz, the multiple terminals can be applied to different occasions vary in area sizes and background noises; It is made of high quality engineering plastic, which ensures long-term durability, and will never be out of shape or fading; Spring clip clamp makes the easy and secure installation; Driver surround excellent damping, long life, clear and sonorous sound.

It is an ideal choice for industrial and commercial applications in hotel, school, office and factory where background music and paging is needed.

Features

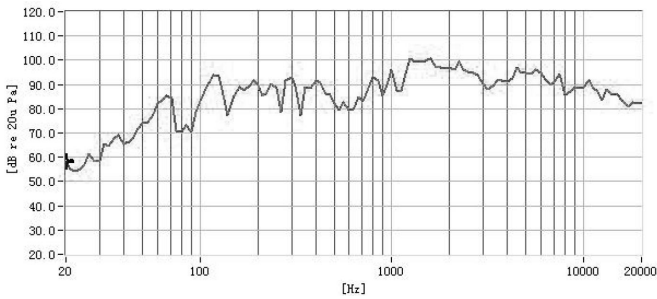
- Adopt fashionable rounded edges and carbon alloy aluminum mesh with RAL white coating so as to integrate with any indoors perfectly.
- Equipped with 6.5" full-range loudspeaker with magnetic circuit encapsulated with special engineering plastic process, and the drum paper formed with tripping and hot pressing of algae salved organisms, for super-strong reproduction of voice and music.
- In compliance with IEC268-5 PHC standard, it can work continuously for 100 hours and carry out SAFE test under the rated power, and can bear twice rated power in a short time, which ensures the reliability of the speaker under extreme conditions, extends service life and greatly reduces the chance of failures or performance degradation.

Specifications

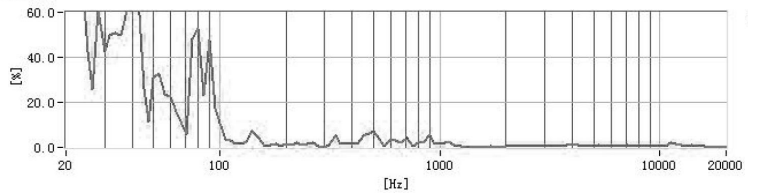
Model		DSP124
Unit Driver		6.5"×1
RMS		6W
MAX. POWER		10W
Rated Voltage	70V	3W/6W
	100V	6W/10W
Sensitivity (1m, 1W)		90dB±2dB
Max. SPL(1m)		92dB±2dB
Freq. Resp.		90Hz-20kHz
Mounting Hole		∅165-∅170mm
Dimension		70mm×186mm
Weight		0.66kg

Product Information

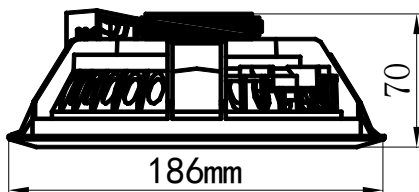
Frequency Response



Distortion



Dimension



Mounting Hole

