

DSP1020

10" 200W Outdoor Waterproof Horn Speaker



Description

The DSP1020 is a high-power long-range horn speaker with a coaxial design for treble and bass, featuring professional-grade coaxial drivers. It features efficient sound transmission, strong penetration, and high speech intelligibility. The enclosure is made of PP material, offering waterproof, corrosion-resistant properties, making it suitable for various extreme climates and environments. This product is widely used in stadiums, schools, training grounds, air raid warning systems, coastal beaches, and highways.

Features

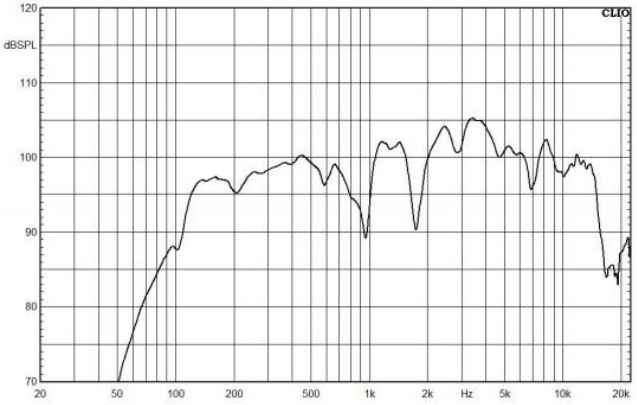
- Driver Unit: 10"×1, 1.8"×1, Rated Power 200W
- Signal Input:100V or 8Ω
- Frequency Response:110Hz-16KHz
- Sensitivity(1W/1M):97±3dB
- Max. SPL:120±3dB
- Coverage Angle:40×70
- Connector:2×Neutrik SpeakonNL4
- Product Size: 360×360×370mm
- Product Weight: 14kg
- Waterproof level: IP56

Specifications

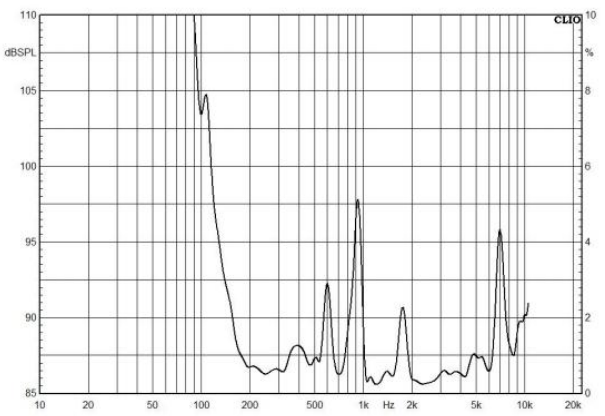
Model	DSP1020
Speaker Unit	10"×1, 1.8"×1
Rated Power	200W
Input	100V/8Ω
Frequency Response	110Hz-16KHz
Sensitivity (1W/1M)	97±3dB
Max. SPL (1M)	120±3dB
Coverage Angle	40×70
Waterproof level	IP56
Color	Black/Grey
Product Weight	14kg
Product Size	360×360×370mm

Product Information

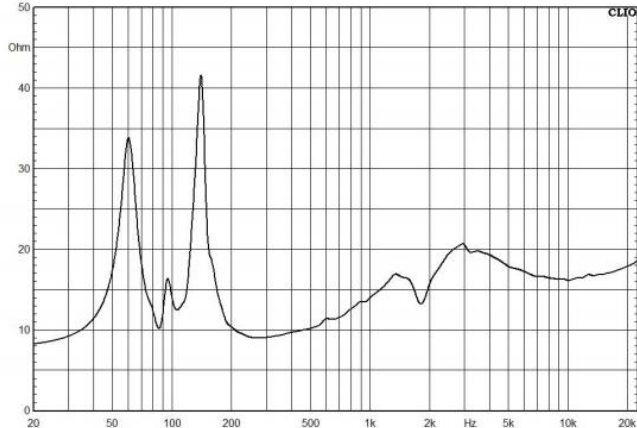
Frequency Response
(dB SPL, 1W, 1m)



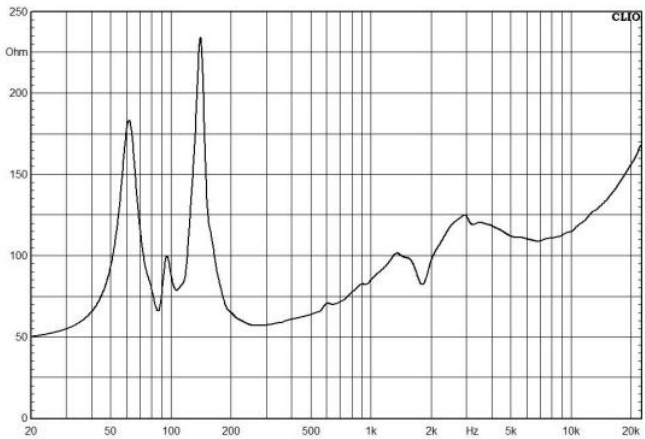
Distortion
(THD < 1.5% 1W, 1m, 100Hz-10kHz)



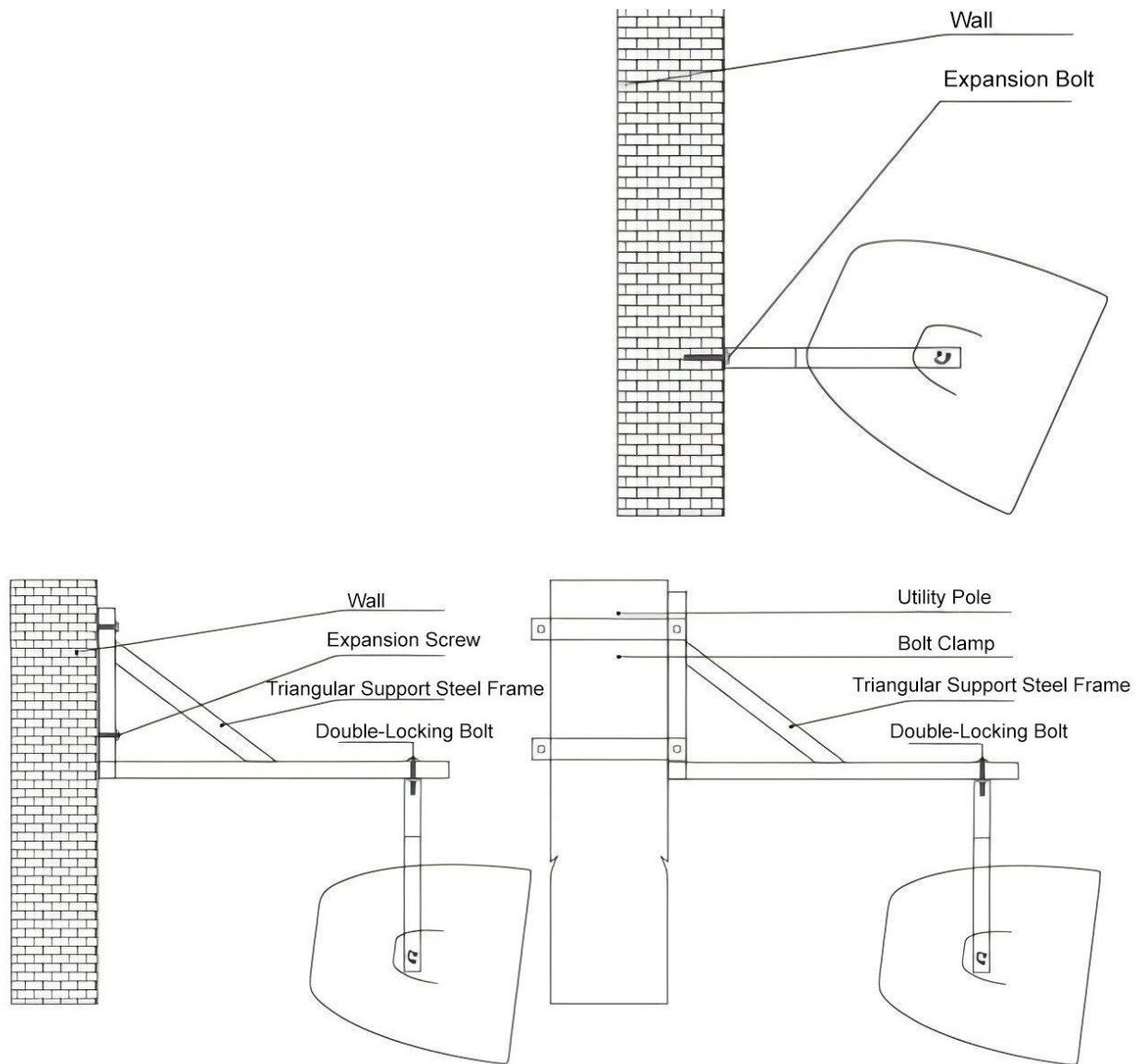
Impedance Curve
(Constant Impedance)



Impedance Curve
(Constant Voltage)



Installation Diagram



Connection Method

- To operate in constant impedance mode, set the red jumper to terminals 1-2, then connect the amplifier output to terminal 1 (+) and terminal 4 (-).
- To operate in constant voltage mode, set the red jumper to terminals 2-3, then connect the amplifier output to terminal 1 (+) and terminal 4 (-).

